

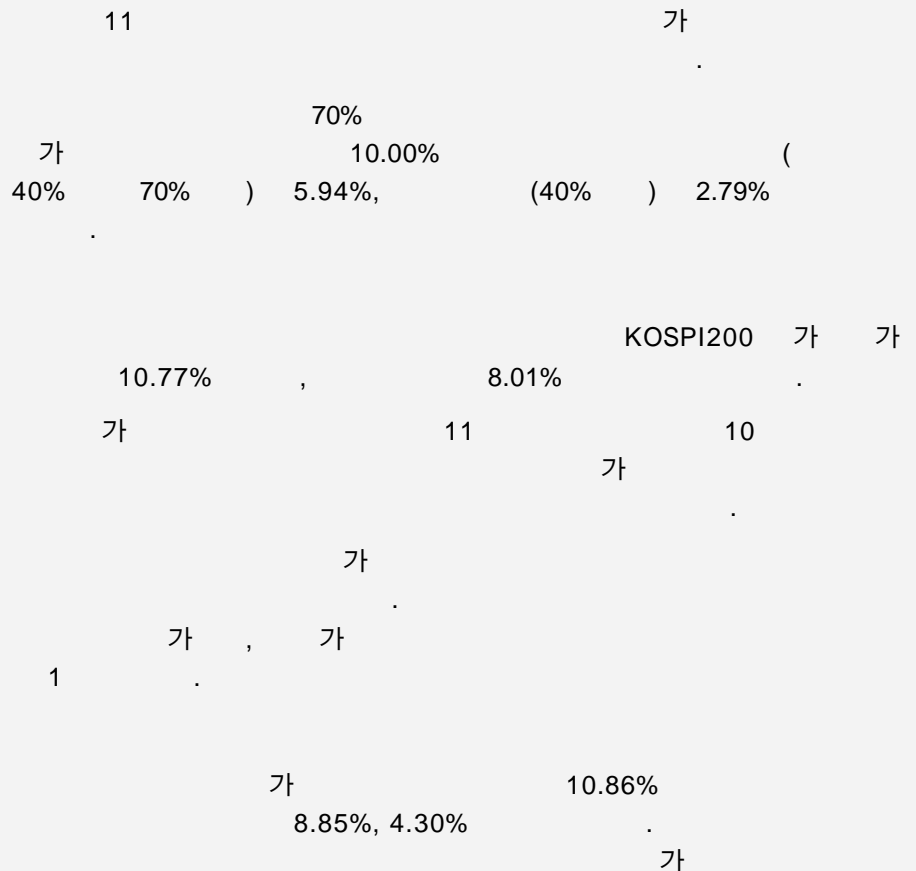
2.

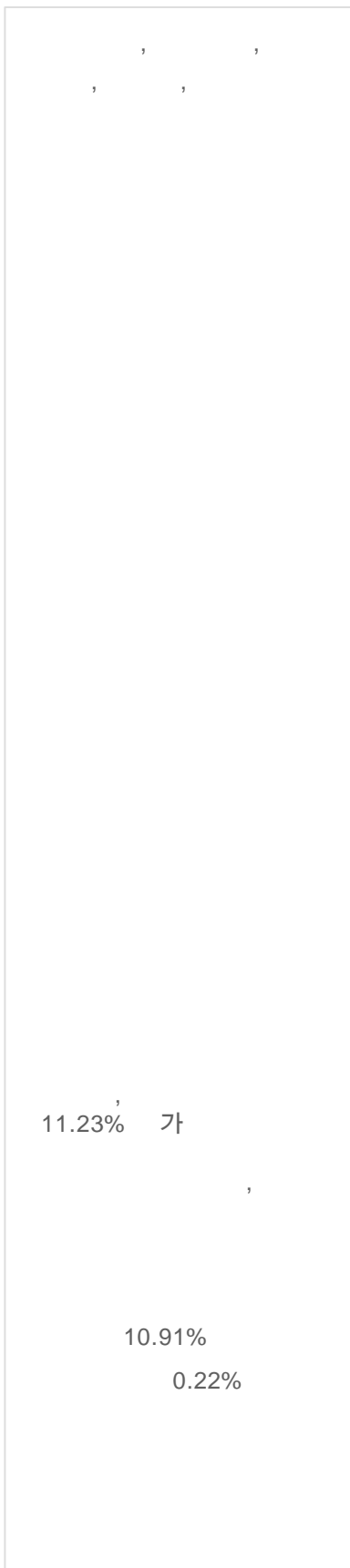
11

(: ,%)

	가		1	3	6	
	121,429	-640	10.00	0.59	-5.18	11.27
()	43,589	33	10.05	0.89	-4.92	12.22
()	77,840	-673	9.96	0.39	-5.35	10.71
	28,686	-413	5.94	1.91	-0.01	9.12
	76,872	-4,571	2.79	0.96	0.29	4.96
	5,561	-108	7.38	-2.37	-8.81	-1.76
	4,080	-301	0.22	0.78	1.53	6.20
	17,322	-63	10.91	0.09	-7.15	6.97
	44,211	-3,630	0.80	0.43	1.18	4.60
	106,285	-6,263	0.75	0.91	1.66	4.77
	21,999	-3,171	1.17	0.42	0.33	3.80
	774	-45	2.66	3.01	3.75	6.19
	14,887	-874	4.66	1.13	-0.55	5.68
	149,870	-1,034	3.31			

10.00%
5.94%
2.79%





(11.21%),	(14.23%),	(12.77%),	(12.23%),
		(12.80%)	10
7.93%		가	9.76%,
7~9%			
LG 가	31.08%(가	3
)	. LG	3	450
		TFT-LCD 가	
	가	가	
10	15.58%	가	11
SDI			12.17%
3			15.59%, 17.37%
		SK (10.44%)	
KT(4.37%),		(6.23%)	
가			10
9	1.25%	10	1.53%
		25%	75%
		, 11	2.03%
100			03
12.28%			2
!	(12.10%)		B3 (12.21%), BEST
100		1	OH 1
가		10.36%	
		3	4
		가	9.39%, 9.28%
		LG M.P	B 5 가 4.37%
	2	3	LG
11.23%	가	(300)
			11.23%
가			8.60%,
3.67%			
가			10.91%
			가
10.91%			가
0.22%		(10.77%)	11.88%
			11
0.22%(10	0.18%)	0.40%	

0.80%
0.75%

0.80%, 0.75%					
()				3 가 0.53%	
가				(
) Choice-Up		1 ()	가	0.52%, 0.40%	
가			TAMS		
12.11%				20%	
		C3- 1 가 3.09%,			
		B2 가 C-1 가 6.88%			
		7%		가가	
28	937.91	12 2 998.07	4	60 , 6.4%	
		300	12 3	1005.36	
			가		
				82.6%	84.2%
		41.5%	45.5%,	21.8%	1.6%
					23.7%

11

(: ,%)

	가		1	3	6	
가	309,645	-17,451	0.396	1.080	2.619	4.852
가	182,775	-14,034	0.399	1.109	2.682	4.963
(가 3)	150,587	-13,193	0.393			
(가 6)	32,188	-841	0.430			
가	101,044	-3,590	0.396	1.025	2.484	4.655
가	7,481	-36	0.330	1.005	2.746	4.856
ABS	4,078	-4	0.218	0.845	2.302	4.406
가	232,352	41,516	0.451			
()	197,772	39,598	0.446	1.207	2.746	5.176
()	32,509	1,908	0.471	1.250	3.280	5.257
()	2,071	11	0.488	1.479	5.054	9.248
MMF	512,349	29,960	0.377	1.107	2.218	4.023
(MMF)	348,966	18,215	0.370	1.086	2.174	3.936
(MMF)	163,383	11,745	0.391	1.150	2.314	4.227

0.40%(4.67%)

3

0.02%p 5.35%

가 가 가 가 11

0.40%(10 0.32%)

4.67% . 7 6.26%, 8 5.90%, 9 4.57%, 10 3.73%

FRN가 , 3

가

11 ,

가가 FRN

3 0.02% (가) 5.35%

5 -0.01% 5.62%, 1 (10)

-0.11% 5.61%, 1 -0.04%p 5.05%

()

7 10 3 0.75%p

4 0.43%p 5 3 0.48%p

0.27%p , 10 1 1.11%p 0.73%p

(3) BBB -

가 AA - -0.13% 6.33% . 10

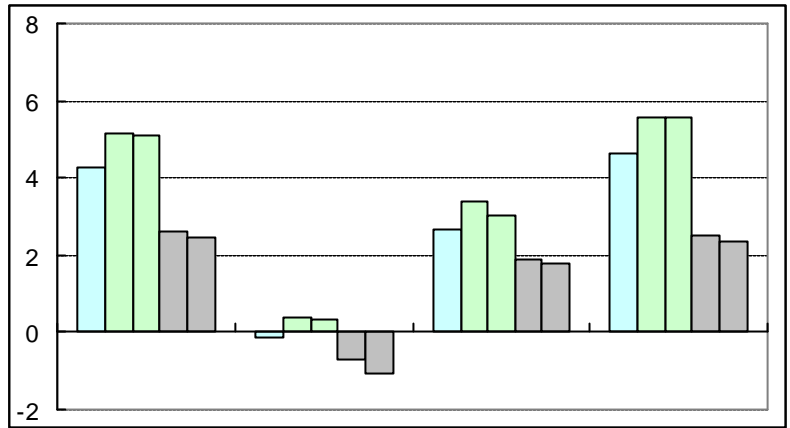
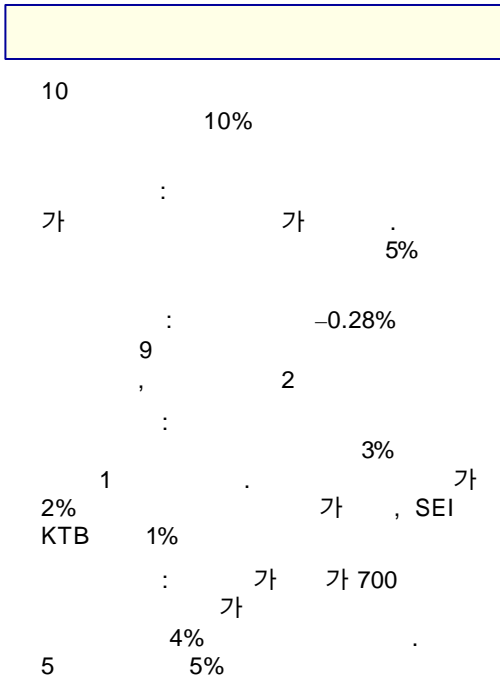
가 0.03%p 0.17%p

3. 가

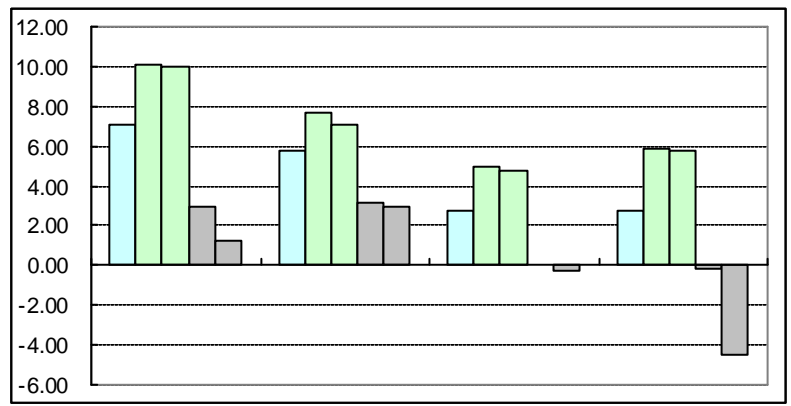
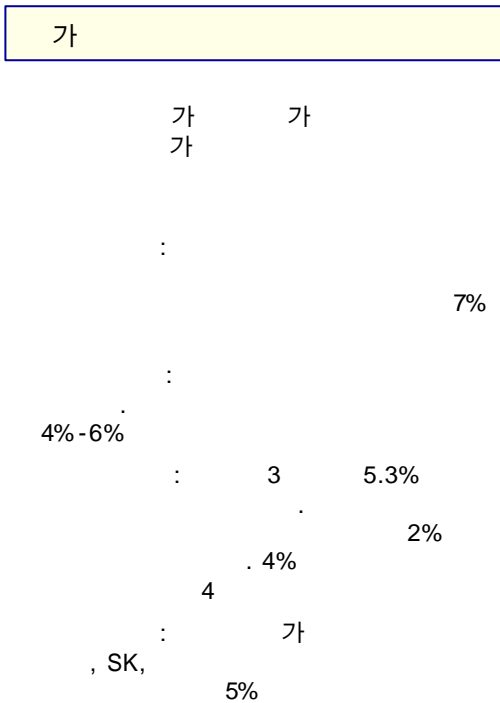
, /MMF

가	MMF	가 3	가	가
-2,127		10 1 1,939	10 가 -2,127	
-1,726		2 3,903	10 -1,726	
-2 3,903		2 5,524	가 ,	
2 5,524 가	MMF	10 1 2,647	가 61 9,465	
MMF 3 640 가	가	51 2,657	11 3 640	
10 239		11 -640		
-753		-413		
-1,490		3 -4,571		
가	가			28
4,526				
		10	10	
		-2,177 , -3,428		
11 -3,630 , -6,263				
				가 -4
-2,047		3 1,474		
가 -12 -4,145				3 2,436
-3,171				4 -2,465

4. 가



	4.25	5.15	5.09	2.62	KTB	2.48
	-0.16	SEI 0.38	0.31	-0.68		-1.06
	2.66	3.38	3.02	KTB 1.89	SEI	1.80
	4.62	KTB 5.58	5.55	SEI 2.52		2.37

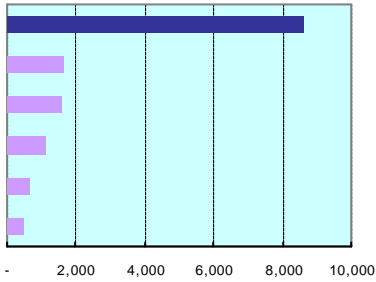


	7.12	10.12	10.00	2.99		1.21
	5.78	7.64	7.11	3.20	SK	2.95
	2.70	4.98	4.77	0.08	SK	-0.31
	2.72	5.82	5.73	SK -0.22		-4.46

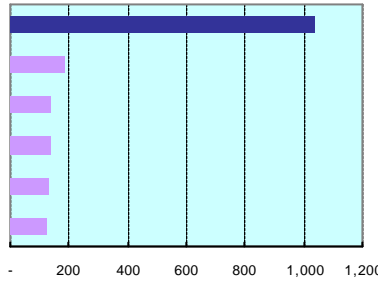
: 2002.11.04 2002.12.02 (4)

() 5

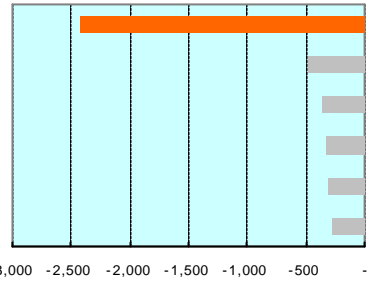
가



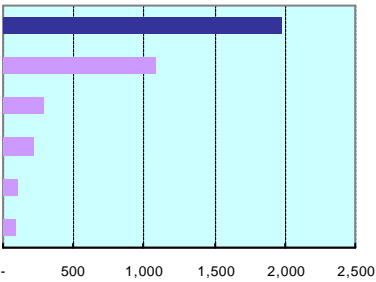
2002.11	
115,195	8,619
20,635	1,606
17,370	1,580
13,999	1,098
7,811	654
LG	4,803



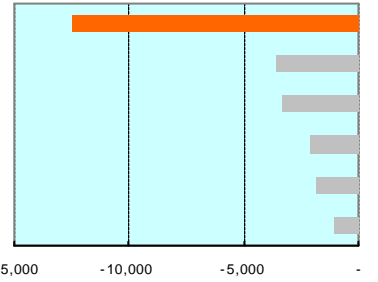
2002.11	
28,669	1,039
2,879	183
4,455	140
2,382	136
1,992	130
1,348	122



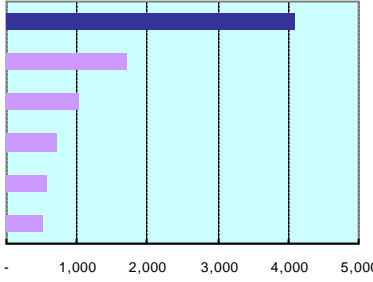
2002.11	
78,122	-2,416
5,237	-472
2,564	-361
3,084	-328
288	-314
SK	1,023



2002.11	
17,770	1,970
5,527	1,086
287	287
2,473	207
1,133	106
999	84



2002.11	
199,496	-12,482
48,074	-3,613
24,464	-3,303
33,586	-2,124
30,958	-1,864
34,174	-1,005

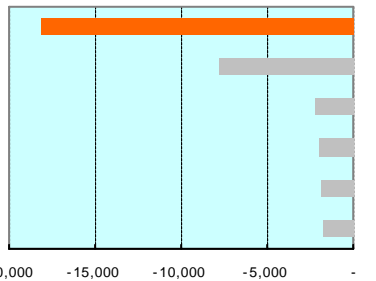


2002.11	
150,336	4,087
16,400	1,712
9,540	1,024
1,849	724
3,123	571
1,230	510

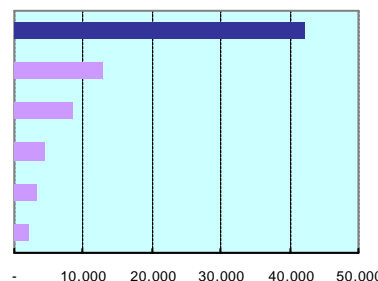
() 5

가

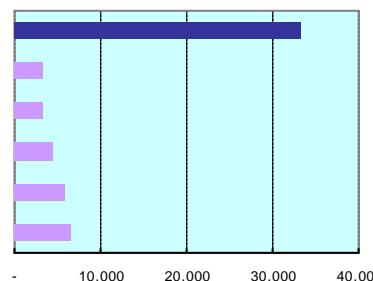
MMF



2002.11	
298,437	-18,102
46,402	-7,744
27,656	-2,202
23,476	-2,022
4,113	-1,882
SEI	5,367



2002.11	
236,173	42,103
46,659	12,749
19,798	8,469
24,766	4,216
LG	11,379
17,815	2,057

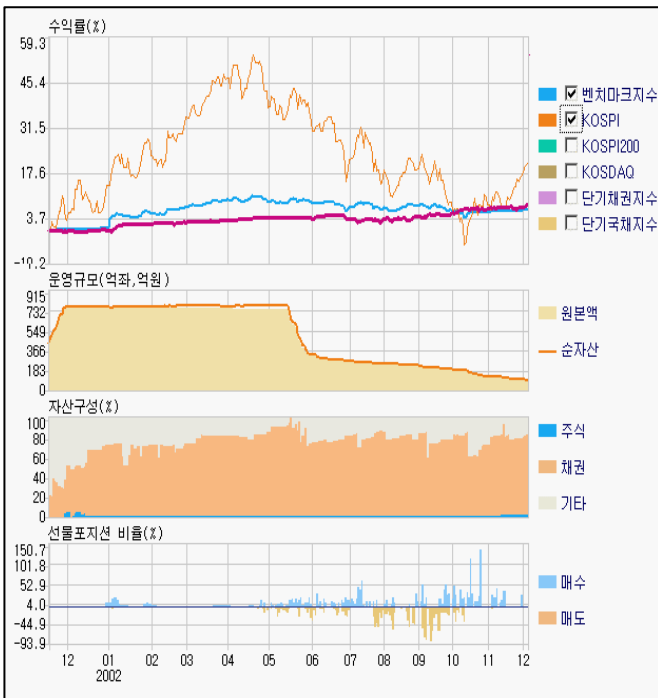


2002.11	
503,253	33,162
39,764	6,403
64,591	5,817
21,831	4,451
6,132	3,338
10,372	3,146

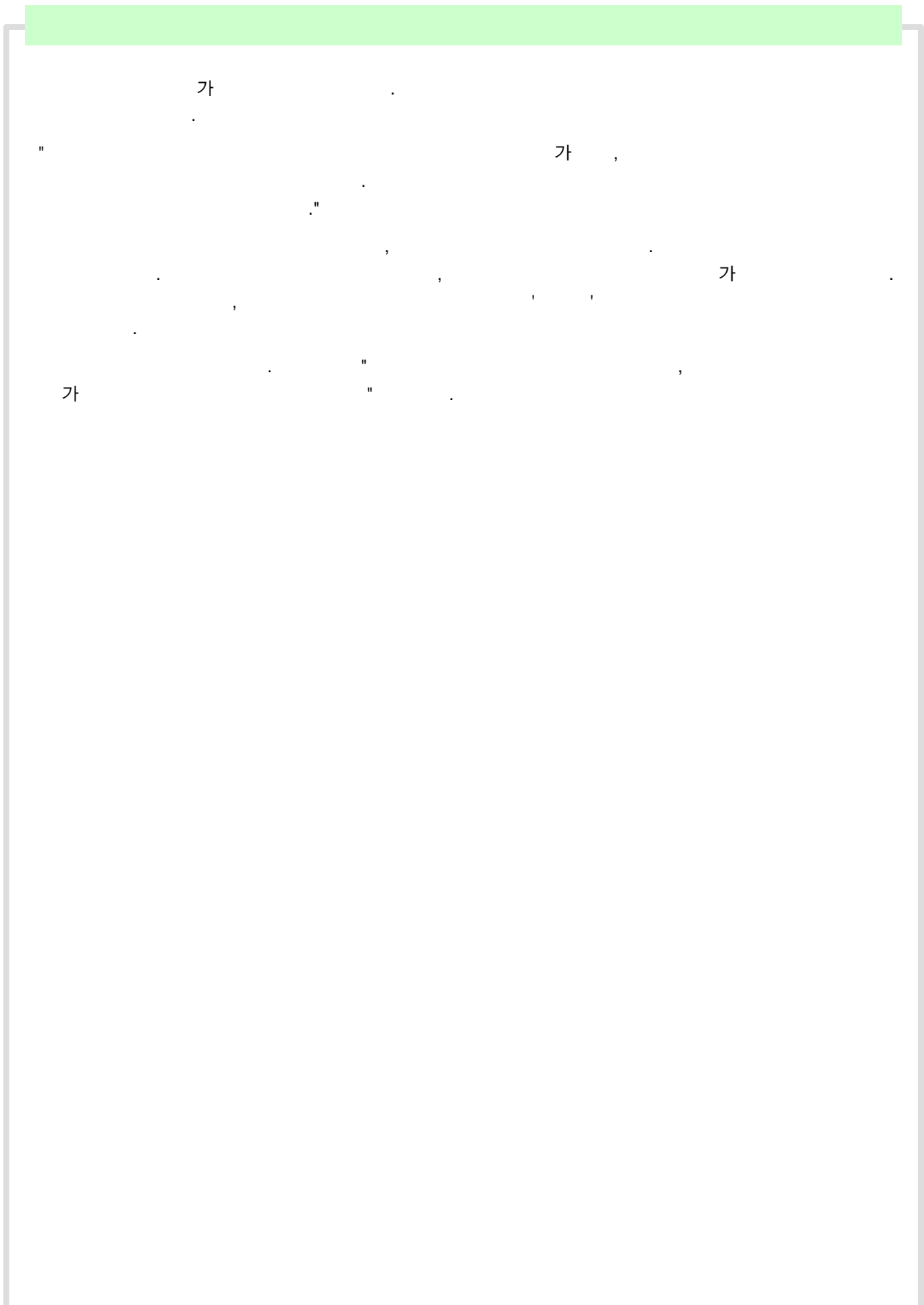


(41)

가 . 87
 . 94
 가
 가
 가
 가



2
 (2001.11.16 /)



6.

[11/02]
 < > 崔仙熙 1 朴商 2 任泰彬

[11/04]
 CW(Corporate Wholesale) (曹雄基)

[11/05]

[11/13] LG
 < > 姜大淳

[11/14]
 金昌洙

[11/18]
 < > 徐錫仁
 < > 康在善 李東洛

[11/21]
 < >

[11/25] 徐京錫 LG
 徐京錫 LG 27 8 (051)583-8906

[11/25]
 < > WHOLESALE 李秦茂
 < > RETAIL 卞相茂 李相律
 < > IT 崔秉華 金赫炷

[11/25]
 < > () 李載珖

[11/25] 李周學
 李周學 =24 26 9 590-2697

[11/29]
 (54) 29

[]